

MATŪS BIŠTAN

PORTFOLIO



EDUCATION

ATELIĚR A02 DOLNÝ KUBÍN

AB ATELIĚR RUŽOMBEROK

OWN PROJECTS

MATUŠ BIŠŤAN ¹⁹⁸²

IN 2001–2007 HE STUDIED ARCHITECTURE AT THE ACADEMY OF FINE ARTS AND DESIGN IN BRATISLAVA. HE DEFENDED HIS DIPLOMA THESIS IN THE STUDIO OF PAVOL PAŇÁK.

IN 2007–2014 HE WORKED IN THE A02 ATELIĚR – THE STUDIO OF STANISLAV ŠUTVAJ WHERE HE, AMONG OTHER THINGS, PARTICIPATED IN ALL STAGES OF PROJECT PREPARATION OF A NEW LIBRARY OF THE CATHOLIC UNIVERSITY IN RUŽOMBEROK.

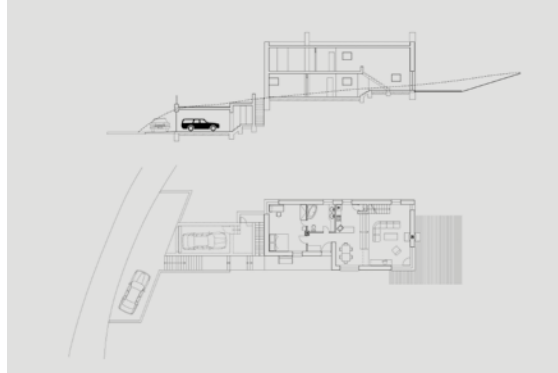
04 06 07 08 10 11 15 16 20

HE COOPERATED WITH AB ATELIĚR – THE STUDIO OF HIS FATHER MARTIN BIŠŤAN IN SEVERAL PROJECTS AND COMPETITIONS.

05 09 12 22

HE TRIES TO FORMULATE ARCHITECTURAL QUESTIONS AND SEEK ADEQUATE ANSWERS IN HIS OWN PROJECTS. SINCE 2013, HE IS A MEMBER OF THE SLOVAK CHAMBER OF ARCHITECTS.

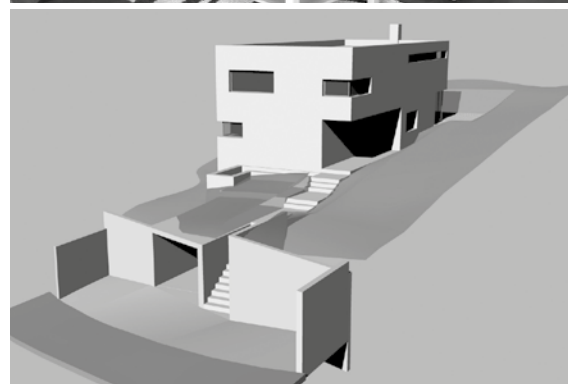
01 02 03 13 14 17 18 19 21



01 FAMILY HOUSE

How to react to the terrain and which way to let the light in?

location Ružomberok – Černová
year 2009
status completed
cooperation Martin Bišťan / Stanislav Šutvaj
photo Pavol Mičán

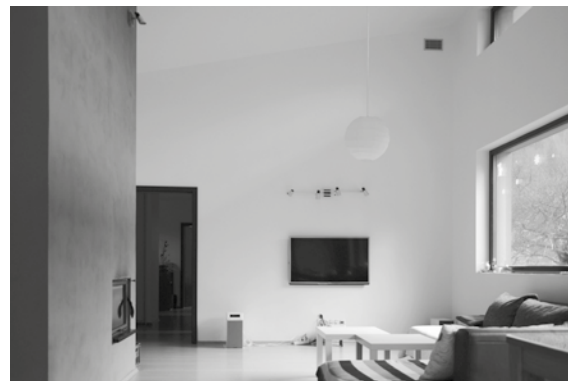




02 FAMILY HOUSE

How to get a house off the ground and create a smooth inside-outside transition?

location	Ružomberok – Biely Potok
year	2014
status	completed
cooperation	Stanislav Šutvaj / Peter Adamčiak
photo	Pavol Mičán
published	archiweb.cz





1st floor plan before reconstruction

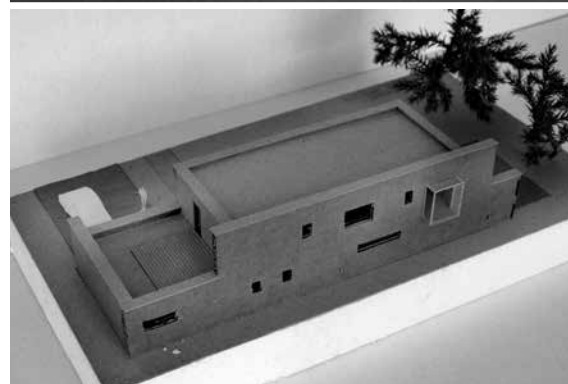


1st floor plan after reconstruction

03 FAMILY HOUSE RECONSTRUCTION

How to add new quality without major changes to proportions and shape of the original house?

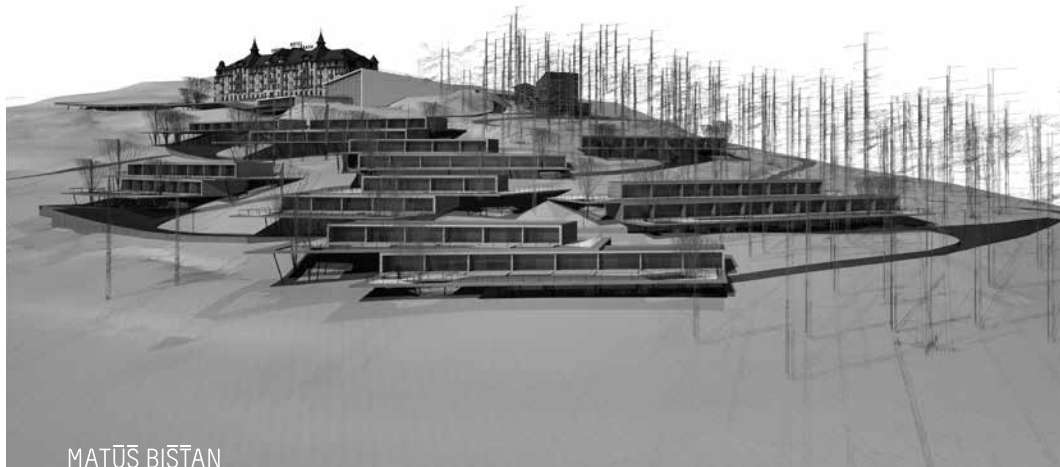
location Ružomberok
year 2012
status completed
cooperation Stanislav Šutvaj
photo Pavol Mičán



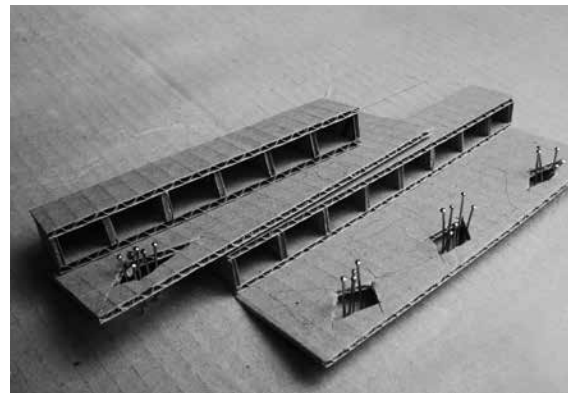
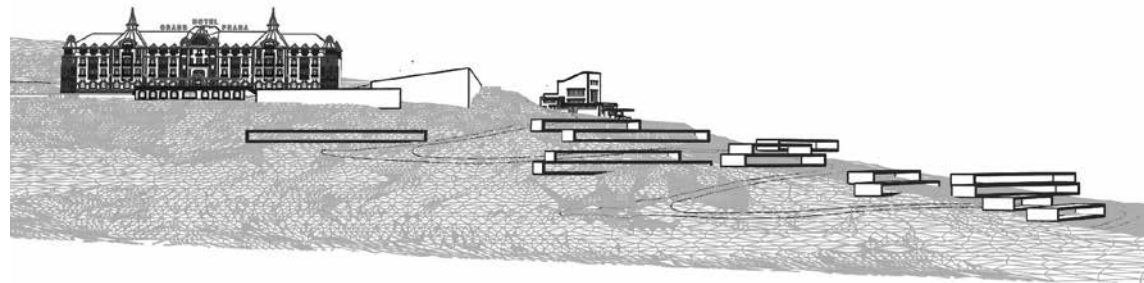
04 FAMILY HOUSE

It is right to apply a universal solution to a specific assignment?

location Dolný Kubín
year 2012
status study
co-author Stanislav Šutvaj
photo of the model Stanislav Šutvaj



MATÚŠ BIŠŤAN

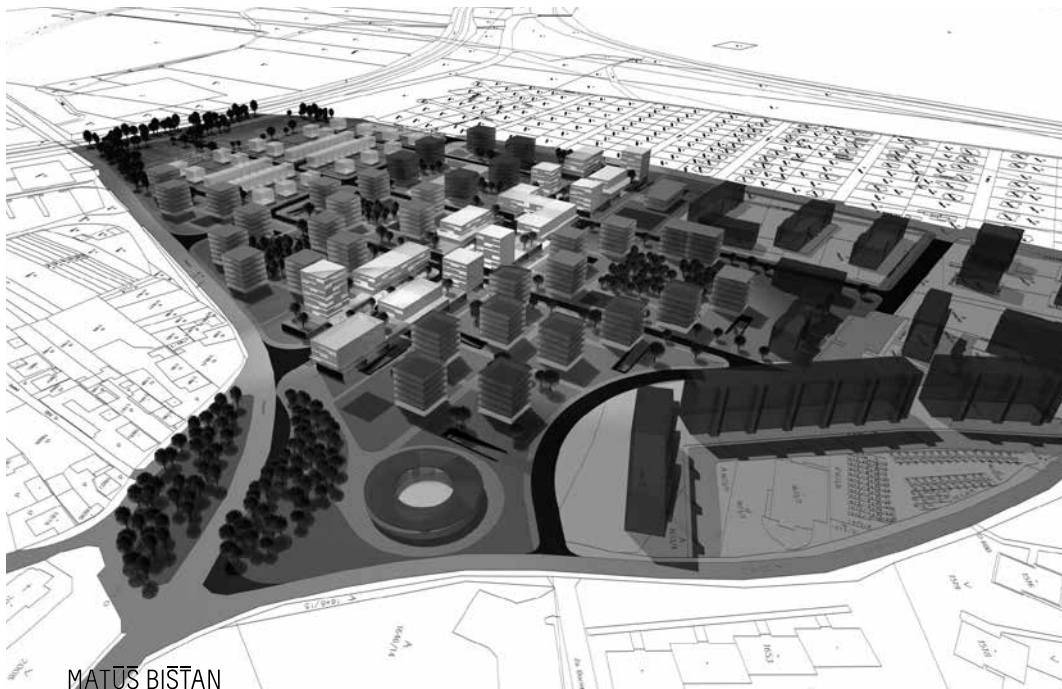


RECONSTRUCTION AND COMPLETION OF GRANDHOTEL PRAHA

05

How to add new functions to a valuable historic hotel
and not to spoil its presence in panoramic views?

location	High Tatras
year	2008
status	invited competition
co-authors	Martin Bišťan / Stanislav Šutvaj Juraj Záhorec / Marián Švec



06

MULTI-FUNCTIONAL RESIDENTIAL ZONE

How to create urbanity at the outskirts of a small town?

location	Liptovský Mikuláš – Palúdzka
year	2009
status	competition – 1 st prize
co-author	Stanislav Šutvaj



MATŪS BIŠTAN

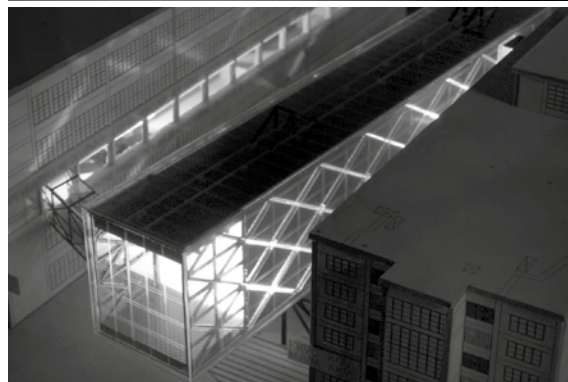
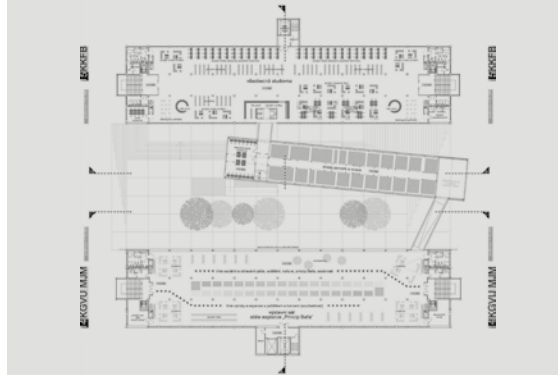
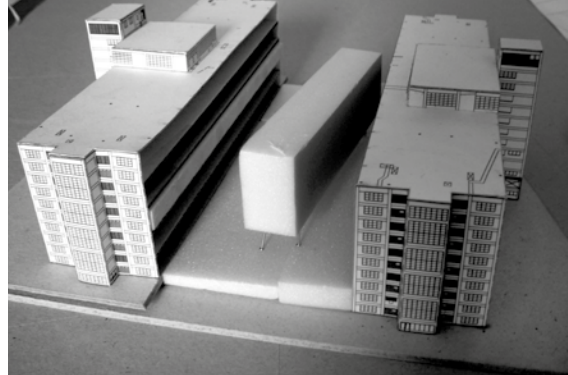


07 RECONSTRUCTION OF THE MAIN SQUARE

How to shape the urban structure and reorganize transport instead of designing the square area?

location Handlová
year 2009
status competition
co-author Stanislav Šutvaj

PORTFOLIO
 1617



08 CULTURAL AND EDUCATIONAL CENTER

What to add and remove from Baťa industrial buildings when changing its production function into a cultural one?

location Zlín (Czech Republic)
year 2009
status competition – honorable mention
co-author Stanislav Šutvaj



09

THE PARISH PASTORAL AND PILGRIMAGE CENTER

How to use the potential of topography to create the background for the pilgrimage place that will not interfere with the dominant church?

location Krivá
year 2010
status study
co-authors Martin Bišťan / Stanislav Šutvaj

PORTFOLIO
 2021



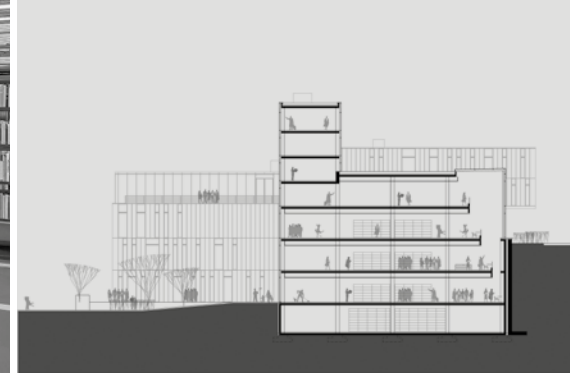
10

CAMPUS OF CATHOLIC UNIVERSITY

Can densification of the existing building structure in limited space multiply links and relationships?

location Ružomberok
year 2011
status urban design study
co-authors Ján Potoma / Stanislav Šutvaj

PORTFOLIO
 2223



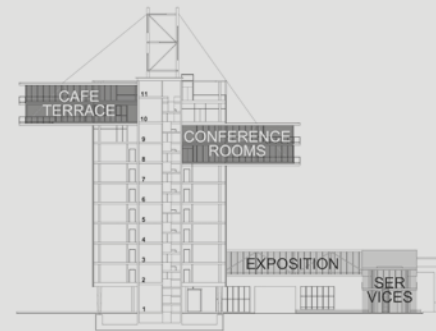
11

UNIVERSITY LIBRARY

Library as a center and starting point in the process of campus densification.

location	Ružomberok
year	2013
status	completed
authors	Jan Potoma / Stanislav Šutvaj
cooperation	Matúš Bišťan
photo	Vladimir Yurkovic
published	archdaily.com archiweb.cz

PORTFOLIO
2425



12 ADMINISTRATIVE AND BUSINESS CENTER

Where to add missing program and how to reorganize an entrance to industrial premises?

location Humenné
year 2012
status invited competition
co-authors Martin Bišťan / Stanislav Šutvaj
 Juraj Záhorec / Pavol Mičán



13 GUESTHOUSE

How to keep the feeling of incompleteness and enhance
the possibilities for further growth?

location Kraľovany
year 2013
status study



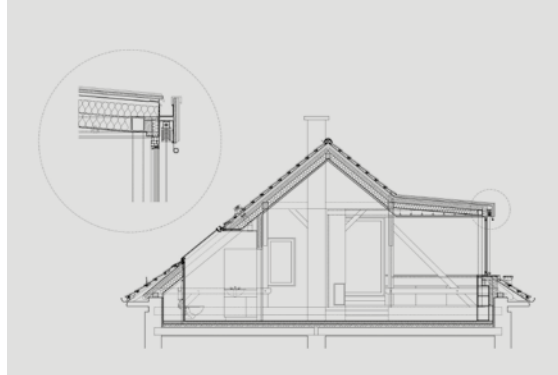
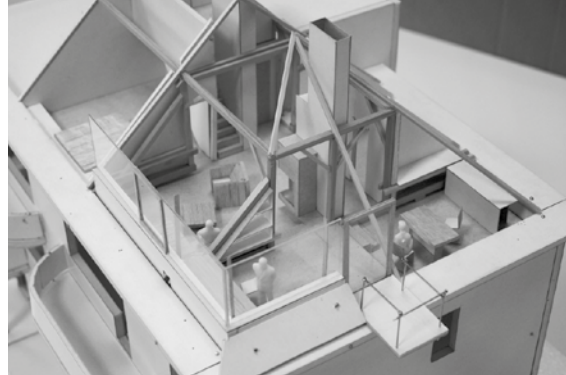
14

APARTMENT INTERIOR

How to get sunlight into a dark apartment and unify a ragged floor plan using furniture?

location Ružomberok
year 2011
status completed
cooperation Martin Bišťan
photo Pavol Mičán
published archiweb.cz





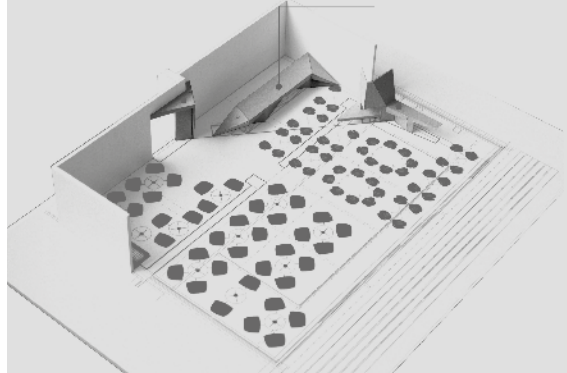
15

ROOF APARTMENT IN A RESIDENTIAL HOUSE

How to preserve the beauty of an old apartment building
and not to be afraid of adding new elements?

location Ružomberok – Malé Tatry
year 2013
status completed
co-author Stanislav Šutvaj
photo Stanislav Šutvaj

PORTFOLIO
3233



16

SEVERAN BAR

How to create a comfortable interior using raw materials?

location Dolný Kubín
year 2013
status completed
co-authors Stanislav Šutvaj / Pavol Mičáň
photo Igor Kupčo / Stanislav Šutvaj

PORTFOLIO
 3435



17 FAMILY HOUSE RECONSTRUCTION

How to re-inhabit an old house?

location Ružomberok
year 2014
status 1st stage completed
photo Pavol Mičáň

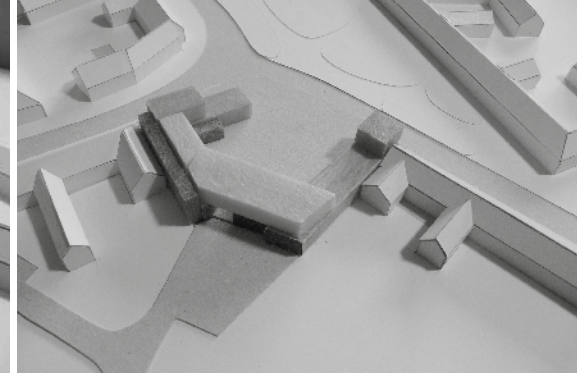


18 FAMILY HOUSE RECONSTRUCTION

How to adapt an old house to a new lifestyle
and utilize unused balconies?

location Ružomberok
year 2014
status in progress
photo Pavol Mičáň

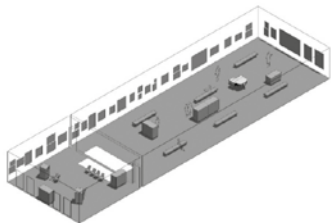




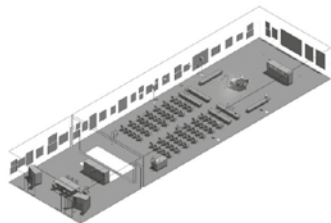
19 TOWN HALL AND LIBRARY

Can a public building provide benefits of a private yard?

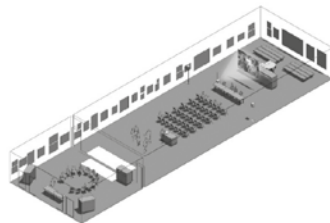
location Leopoldov
year 2014
status competition
cooperation Pavol Mičáň



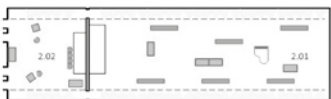
exposition



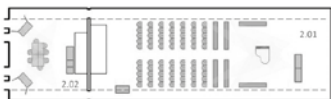
concert



workshop



disposition variability schemes



MATUŠ BIŠŤAN



20

INTERIOR OF THE GALLERY OF ĽUDOVĚT FULLA

Can new furniture contribute to a multifunctional use of an exhibition hall?

location Ružomberok
year 2014
status competition
co-authors Stanislav Šutvaj / Pavol Mičáň

PORTFOLIO
4243



21 FAMILY HOUSE RECONSTRUCTION

How to link two houses under one roof?

location Ružomberok – Černová
year 2015
status project



22 PARISH AND PASTORAL CENTER

How to link a new parish building with the church designed by father 20 years ago?

location Lomná
year 2015
status study
co-authors Martin Bišťan / Peter Sálus

